



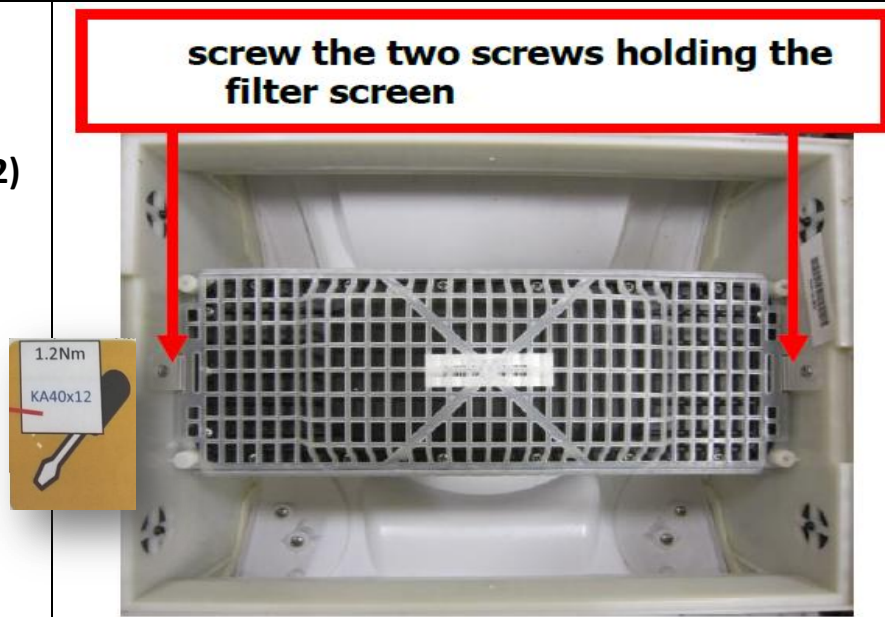
Conversion from Cartridge Filtration to Filter Bag System

<p>1. Conversion kit</p>	 A photograph showing the components of a conversion kit. It includes a white pleated filter bag, a white plastic frame, and two black metal clips used to secure the bag to the frame. The components are laid out on a light-colored surface.
<p>2. Pull out the cartridge</p>	 A close-up photograph of a hand using a yellow tool to pull out a white cartridge from a metal frame. The frame has several slots and a central opening. The hand is positioned at the bottom right, and the yellow tool is inserted into one of the slots.

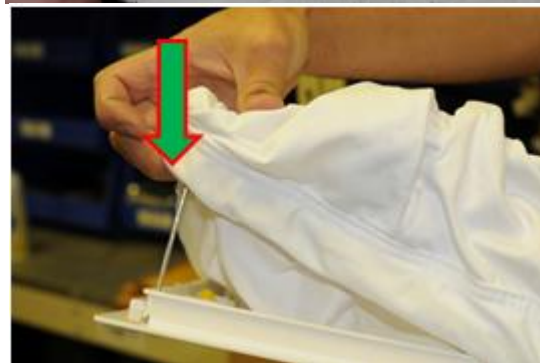
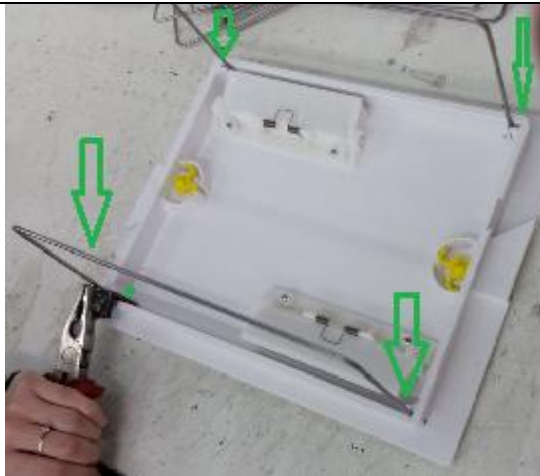
3. Pull out the 2 cartridge corks from their place on both sides of the Dolphin as shown in the pictures



4. Assemble the filter screen with 2 screws (WN1412 A2 KA40X12)



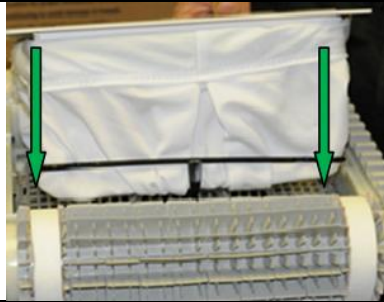
- 5. Filter bag assemble:**
- a. Add the 2 filter bag metal support bag.
 - b. After that add the filter bag
 - c. Add the black plastic clips slide bag on the metal frame.



- 6. When putting filter bag back in place, ensure that the elastic band is completely down over the lip at the base of the bottom plate to prevent dirt and debris from escaping bag.**



7. Insert the filter in to the robot.



Please see link: how to clean filter bag

<https://www.youtube.com/watch?v=yCfv7AtjsMM>