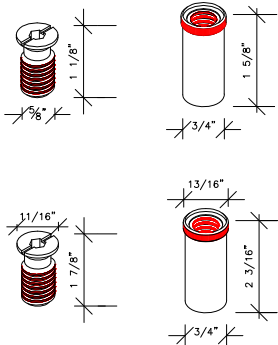


LOOP-LOC HARDWARE

Basic Cover Hardware (not to scale)

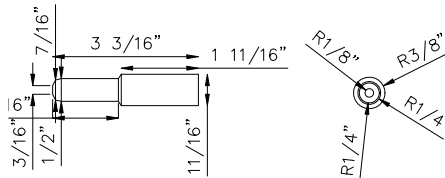
Brass Anchor Assembly (Short & Long)

Used for concrete decks & anchor-in-pipe installations.



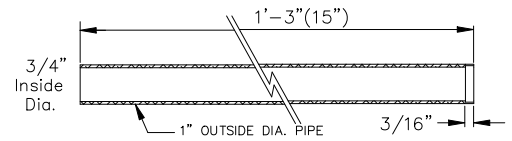
Tamp Tool

Used for installing brass anchors.



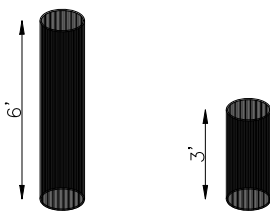
Pipe (For anchor-in-pipe installations)

LOOP-LOC anchors exactly fit 1" diameter pipe. Cannot be used with wood deck anchors.



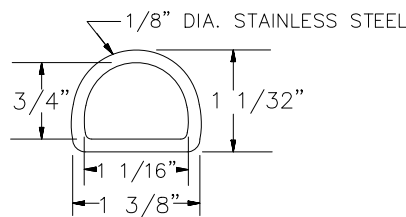
Spring Covers – Regular & Short

UV treated – Used to protect the spring & the deck.



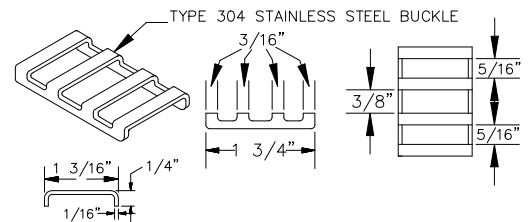
Stainless Steel D-Ring

Used in limited deck areas.

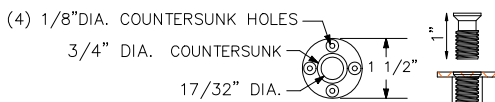


Stainless Steel Buckle

Used to attach the spring to the strap.



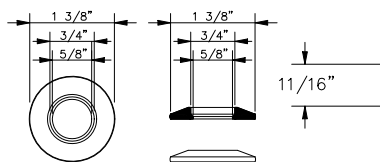
Wood Deck Anchor Flange



Masonry Anchor Collar

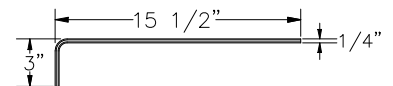
(For brass anchors)

Used to finish or decorate anchor insert.



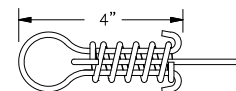
Hex Key

Used for adjusting anchor insert.



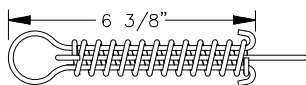
Stainless Steel Springs - Short

Attaches to strap & anchor in limited deck areas. (Note: Use of more than 35% short springs is considered unsafe & voids warranty.)



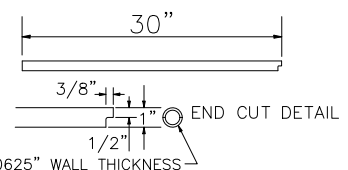
Stainless Steel Springs - Regular

Attaches to strap & anchor to supply tension to the cover.



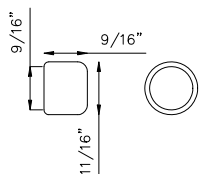
Metal Installation Rod

Used to install & remove springs from anchors.



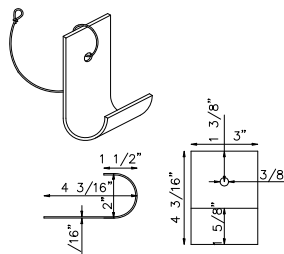
Aluminum Tip

Used to crimp the ends of the straps.



Coping Clip

Used to prevent marring on aluminum bull nose coping.

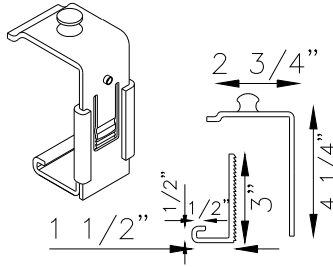


Under Cover Padding Section

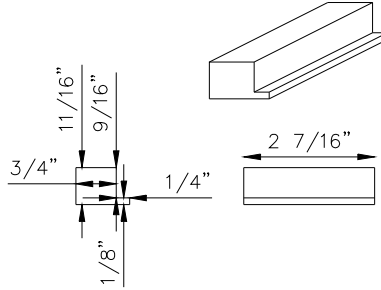
Size 30"x22" Can trimmed on site. Used for added protection. Installed by dealer at jobsite.

On-Ground Hardware (not to scale)

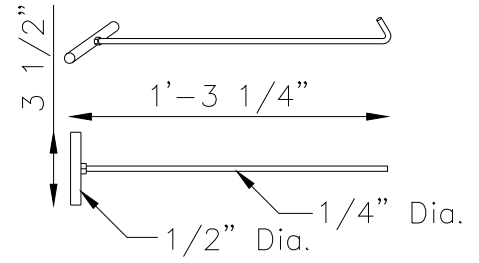
On-Ground Anchor Bracket



Spacer



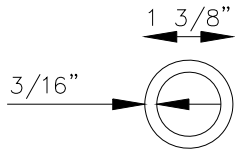
On-Ground Installation Tool



Raised Wall Hardware (not to scale)

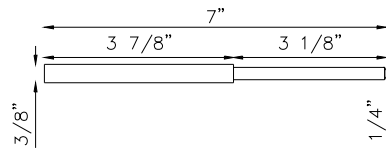
Stainless Steel O-Ring

Holds Cable to cover



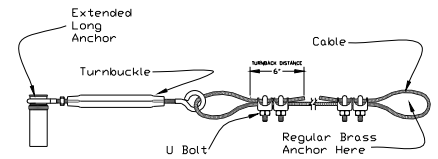
Cable Wall Tamp Tool

Used for installing Wall Anchors.

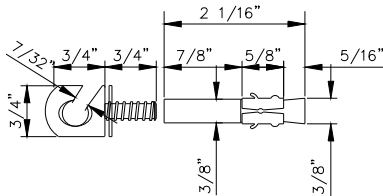


Cable Kit

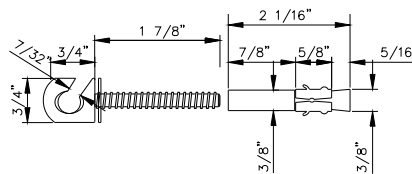
Used with cable treatment to secure cover.



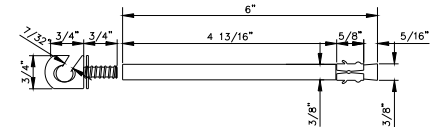
Stainless Steel Wall Anchor (Standard)



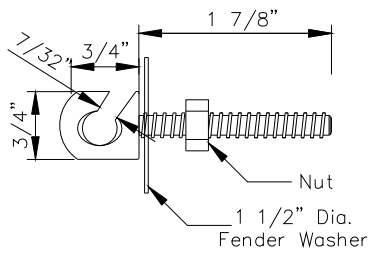
Stainless Steel Wall Anchor (Replacement Before 2003)



Stainless Steel Wall Anchor (For Anchoring Behind Façade Walls)

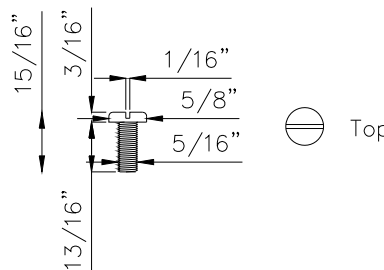


Stainless Steel Wall Anchor (For Anchoring Wood)



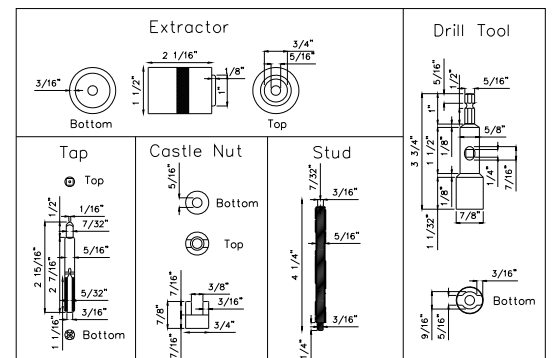
Cable Wall Anchor Decorative Cap

Used to plug hole when wall anchor wall is removed.

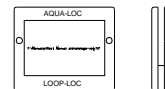
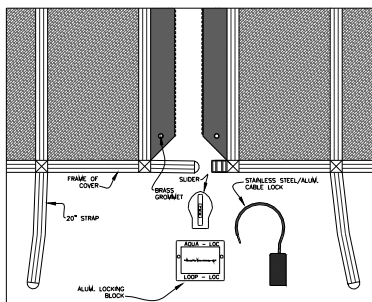


Brass Anchor Extractor Tool

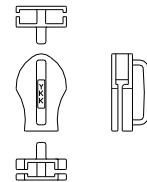
Used to remove anchor casing from deck. Instruction sheet included.



Aqua-Loc Zipper Kit



Locking Block



Slider